

MCCORDSVILLE PARKS AND RECREATION MASTER PLAN 2017-2021

MCCORDSVILLE, INDIANA

- Collaborate with property owners and work with developers to secure easements for trails along stream corridors.

Goal #4: Collaborate with local organization's to implement smaller scaled parks and recreation projects.

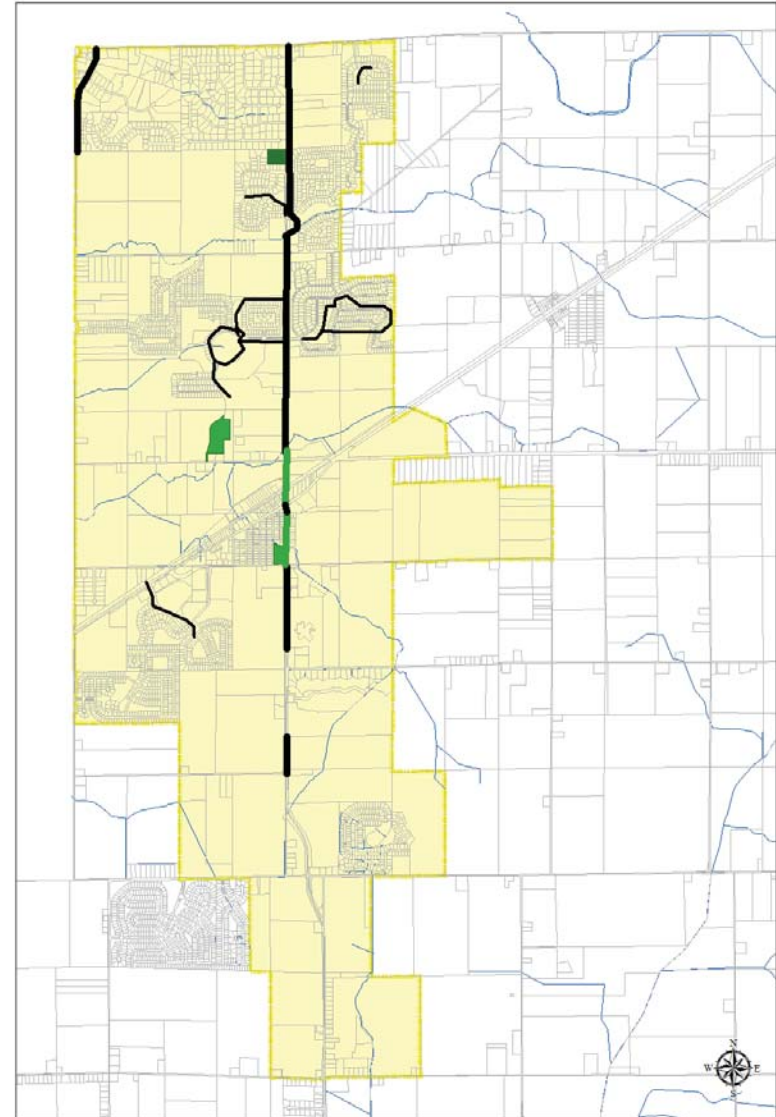
- Seek partnerships to aid in land acquisition, and parks and trail development within the community.
- Develop a volunteer base of invested community members.

New Facilities Location Map:

The map to the right illustrates the existing parks, existing multi-use paths, and proposed paths listed on the Town's 2016-2023 Capital Projects Plan. The two proposed path segments are both along CR600W and are phases 3 and 4 of the Town's multi-phased approach to the multi-use path along CR600W. Once these segments are completed the three main pedestrian barriers along CR600W, the Schulz Ditch, SR 67, and the railroad tracks will have safe pedestrian crossings.

LEGEND

- Existing Multi-use Path
- Existing Subdivision Path
- Multi-use Paths on 2016-2023 Capital Projects Plan
- Stream
- Existing Park
- Existing Nature Preserve



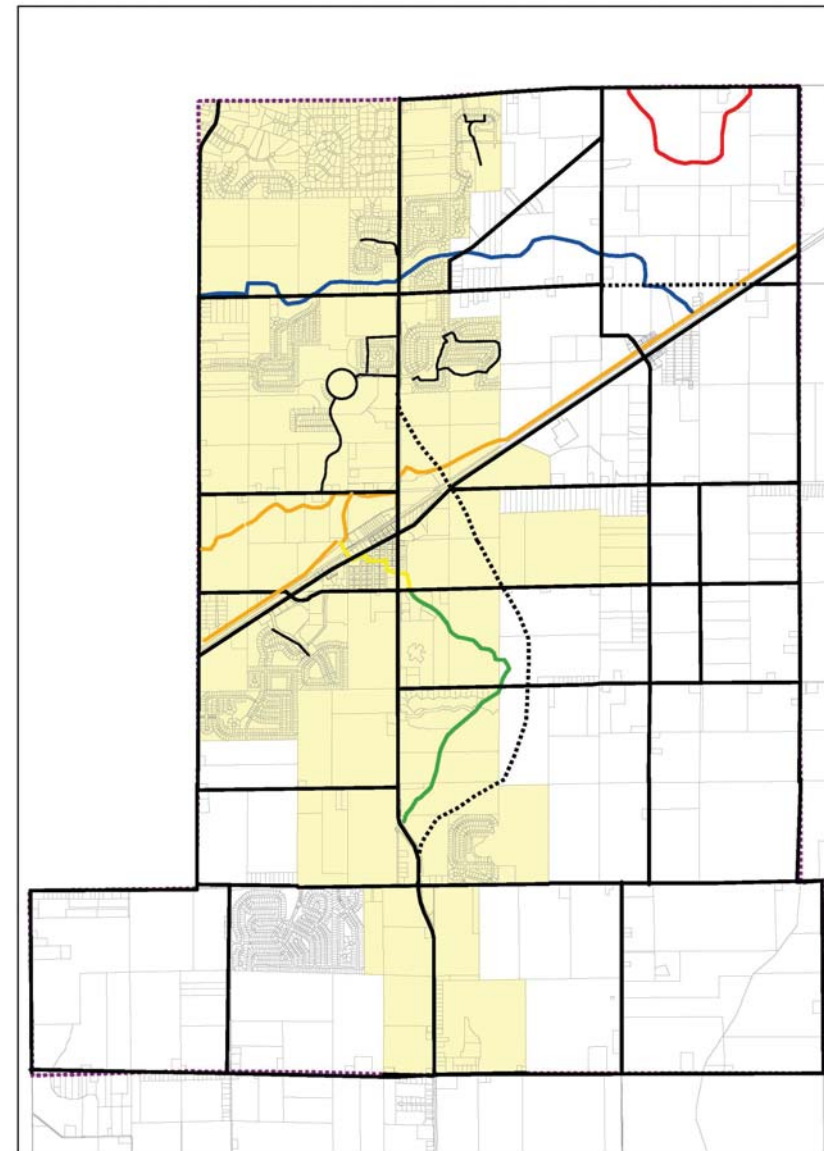
MCCORDSVILLE, INDIANA

Connectivity Plan



Connectivity Plan:

The map to the right is the Town's Connectivity Plan. The map has been updated to include trails along the Town's major stream corridors in an effort to provide more linear recreation opportunities and facilitate off-street pedestrian and bicycle connections. The Town will seek to acquire easement for these stream corridor paths by collaborating with property owners and ensuring new development provides easements and builds adjacent trail segments. Town staff shall work to require easement dedication for these stream trails during the platting process of new development, much like is currently done for right-of-dedication, and the trail infrastructure shall be built during the construction phase of the development at the developers expense. The map also illustrates the location of multi-use paths along all collector and arterial roadways, as detailed by the Subdivision Control Ordinance. A legend is below.



LEGEND

- Multi-use Path along a Local-Collector, Collector or Arterial Rd
- Multi-use Path along a Local Street or within a subdivision
- Multi-use Path along North Fork Creek
- Multi-use Path along Dry Branch Creek/Interurban Trail
- Multi-use Path along Stansbury Ditch
- Multi-use Path along Old Town Ditch
- Multi-use Path along Bee Camp Creek

- Dry Branch/Interurban Trail
- North Fork Trail
- Village Boardwalk Trail
- Stansbury Trail
- Bee Camp Trail